

* Extra 4.5pt
Credit:
Entering
Spiral &
Take
Home
Major
into
LINKIT
before
Due
date

SECTION II:

LINKIT! TEST TAKING – STUDENT EXPERIENCE

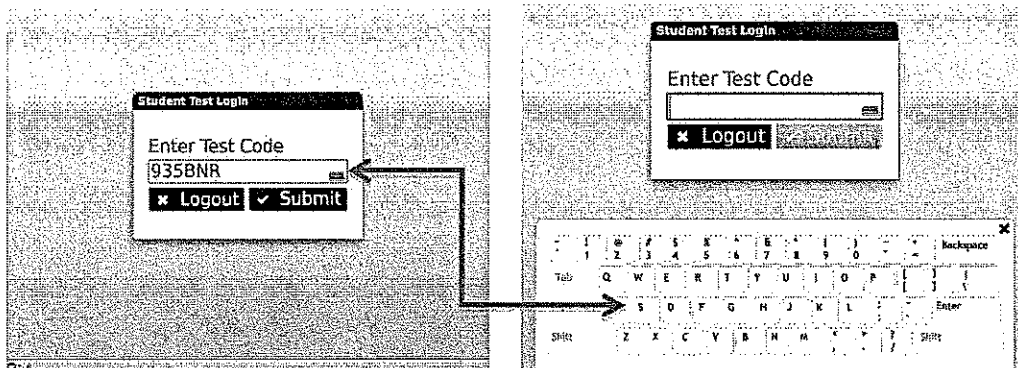
The link for the LinkIt! Test Taking Platform is listed below (please save this link as a bookmark).

<http://www.linkit.com/TestTaker>

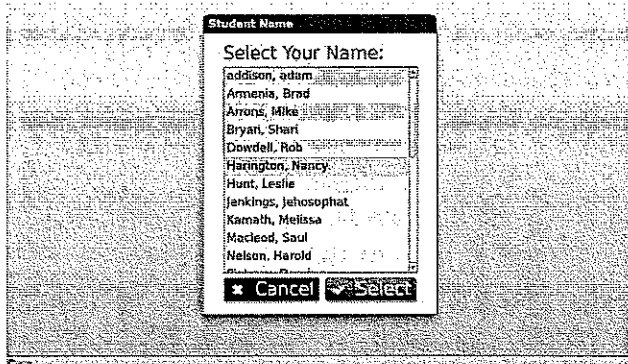
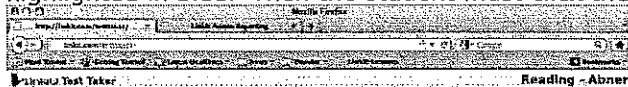
Logging In

Students log into the Test Taker by entering the unique test code into the Student Test Login window. This code unites the class with the specific test that has been assigned, allowing students to bypass several steps, including choosing their teacher, class and test etc.

1. Instruct students to access the bookmarked link above and enter the Test Code. You may wish to write the Test Code on the board or have it printed in a large font on a piece of paper for easy reference.
2. Once the test code is entered into the text box below "Enter Test Code," students must click the green "Submit" button as shown below. If students have difficulty typing the test code using the keyboard, they can click the small keyboard icon on the right side of the typing field. This will bring up an onscreen keyboard where they can click the letters and numbers to enter the code.

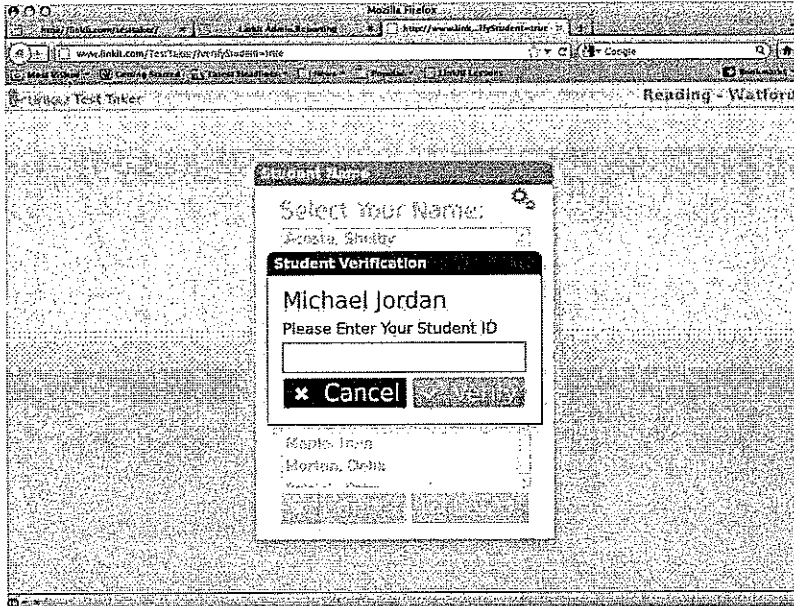


3. The student will then choose their name from a list of students in the class. This list will appear in the Student Name window by clicking their name once so it is highlighted in blue. Then the student must click the green "Select" button.

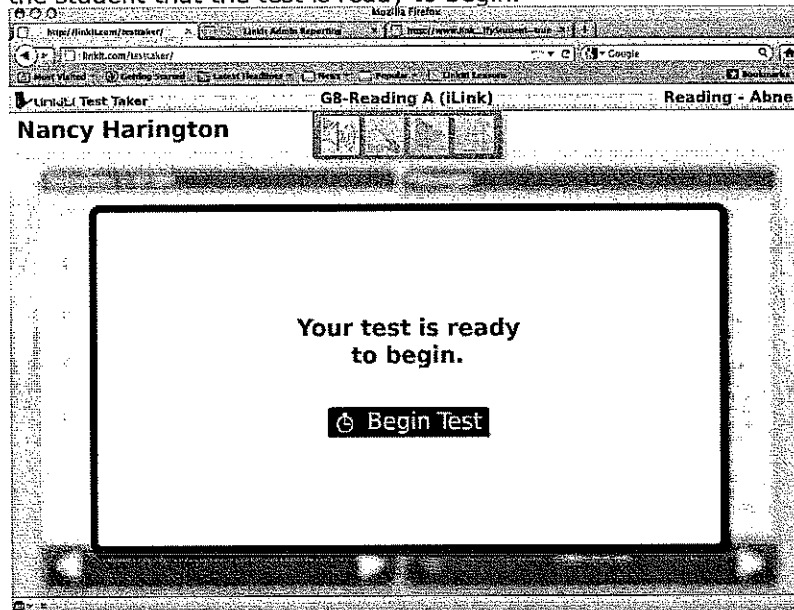


4. For extra security, you may wish to have students verify their identity by typing in their district-assigned student code (or another password designated by the district that is unique to each student). If so, you may bookmark the following link for students to enter the test-taking environment or change the District Test Settings to enable **"Verify Student."**

<http://www.linkit.com/TestTaker/?verifyStudent=true>



5. Regardless of which link you use (with extra security or without), the test associated with the test code will load in the browser. This may take up to 20 seconds, depending on Internet connectivity and the length of the assessment. LinkIT! notifies the student that the test is ready to begin.



6. The student must click the red **"Begin Test"** button to start the test. If the student is logging back in to complete a test that has already been started, the button will read **"Resume Test"** instead.