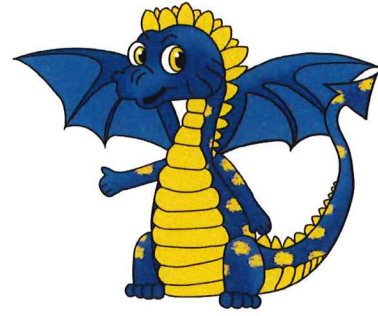


**Lillian M. Dunfee School**  
**Pre K Supply List**  
**2023-2024**



**Necessary Materials**

**Please label all items with your child's name.**

- Full size backpack big enough to fit a folder and a lunch box. It must fit into a cubby. No wheels please.
- A change of clothes in a Ziploc bag (underwear and socks included) Be sure to send in weather appropriate clothes as the weather changes (shoes too- if possible)
- Small blanket and crib size fitted sheet or Nap Mat for naptime
- Ample supply of Pull-Ups & wipes (if your child is not potty trained)
- 1 personal reusable water bottle
- Lunch box
- Headphones (plug in)

**Optional Materials to Donate to Classroom**

- Dry erase markers
- Play doh (4 ounces)
- Watercolors (Crayola)
- Markers
- Crayola Crayons